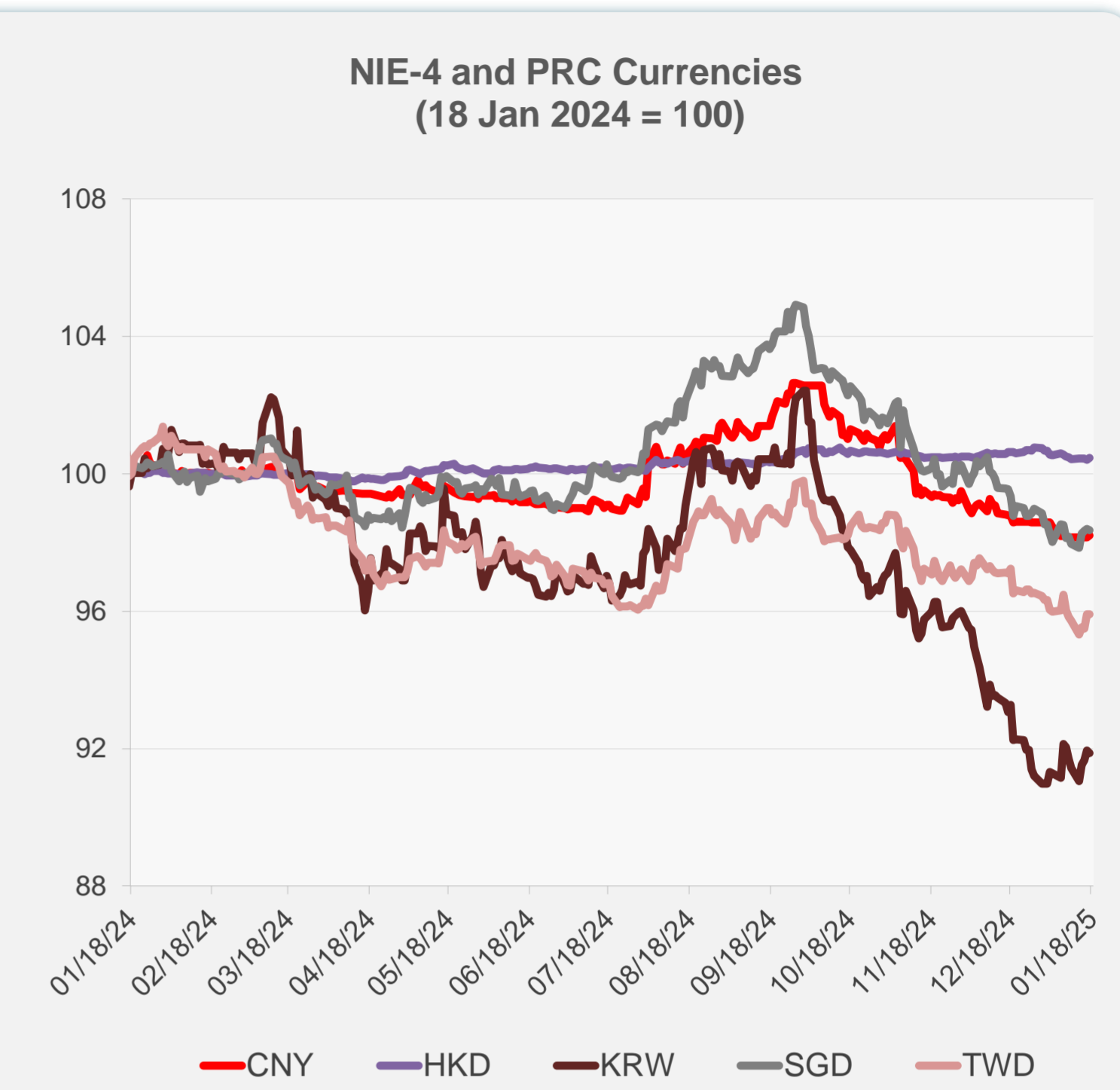
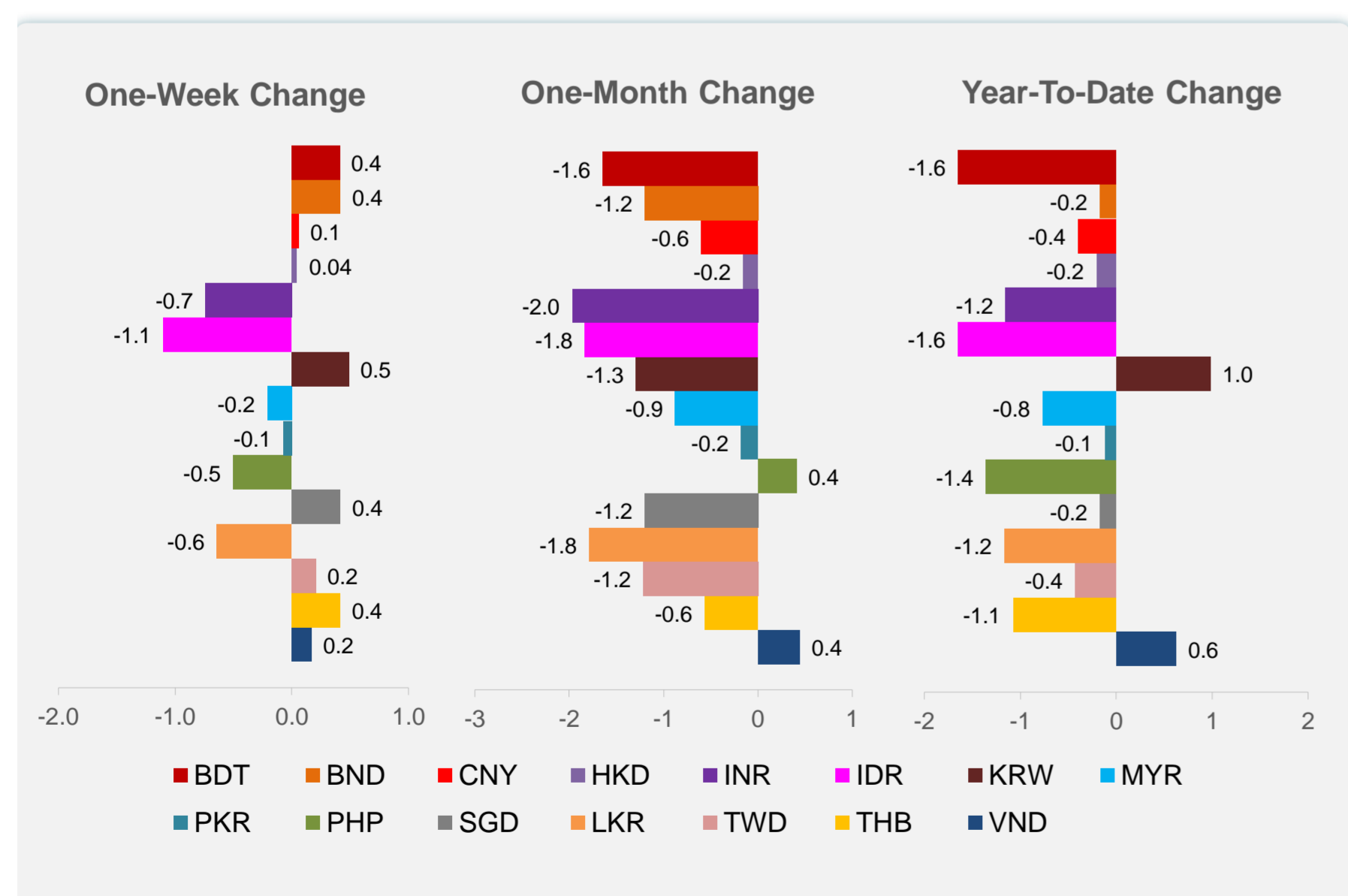
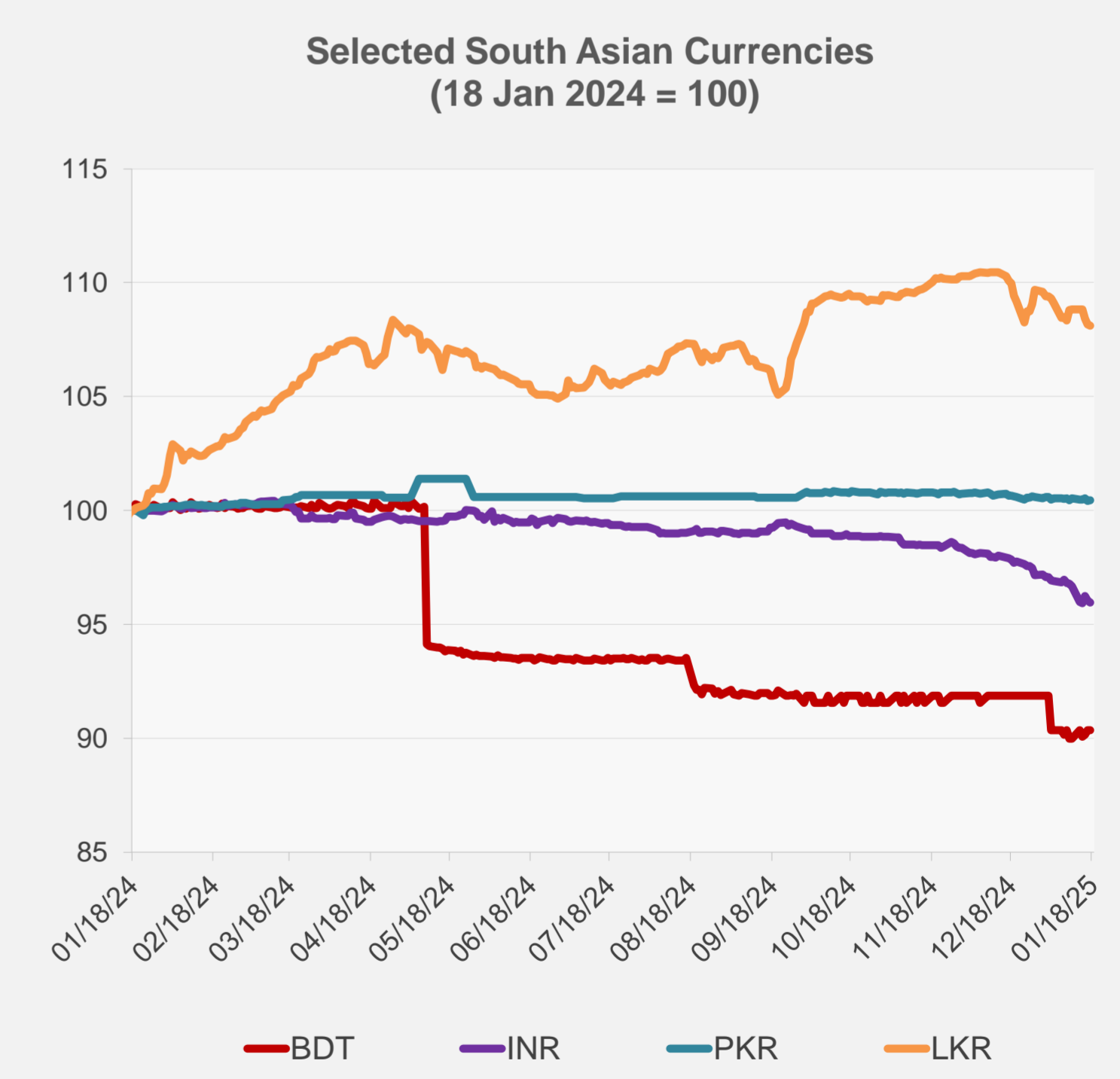
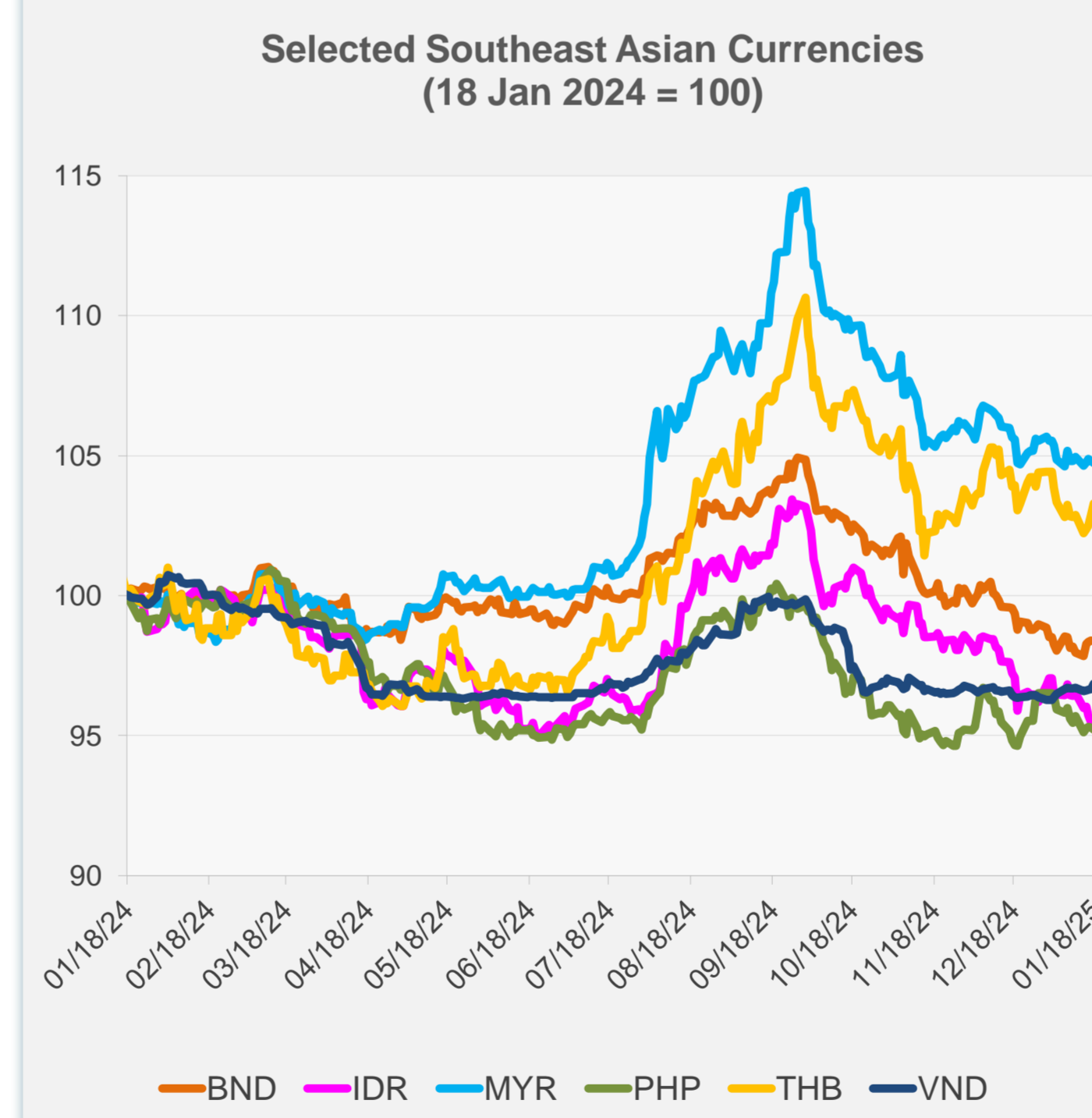


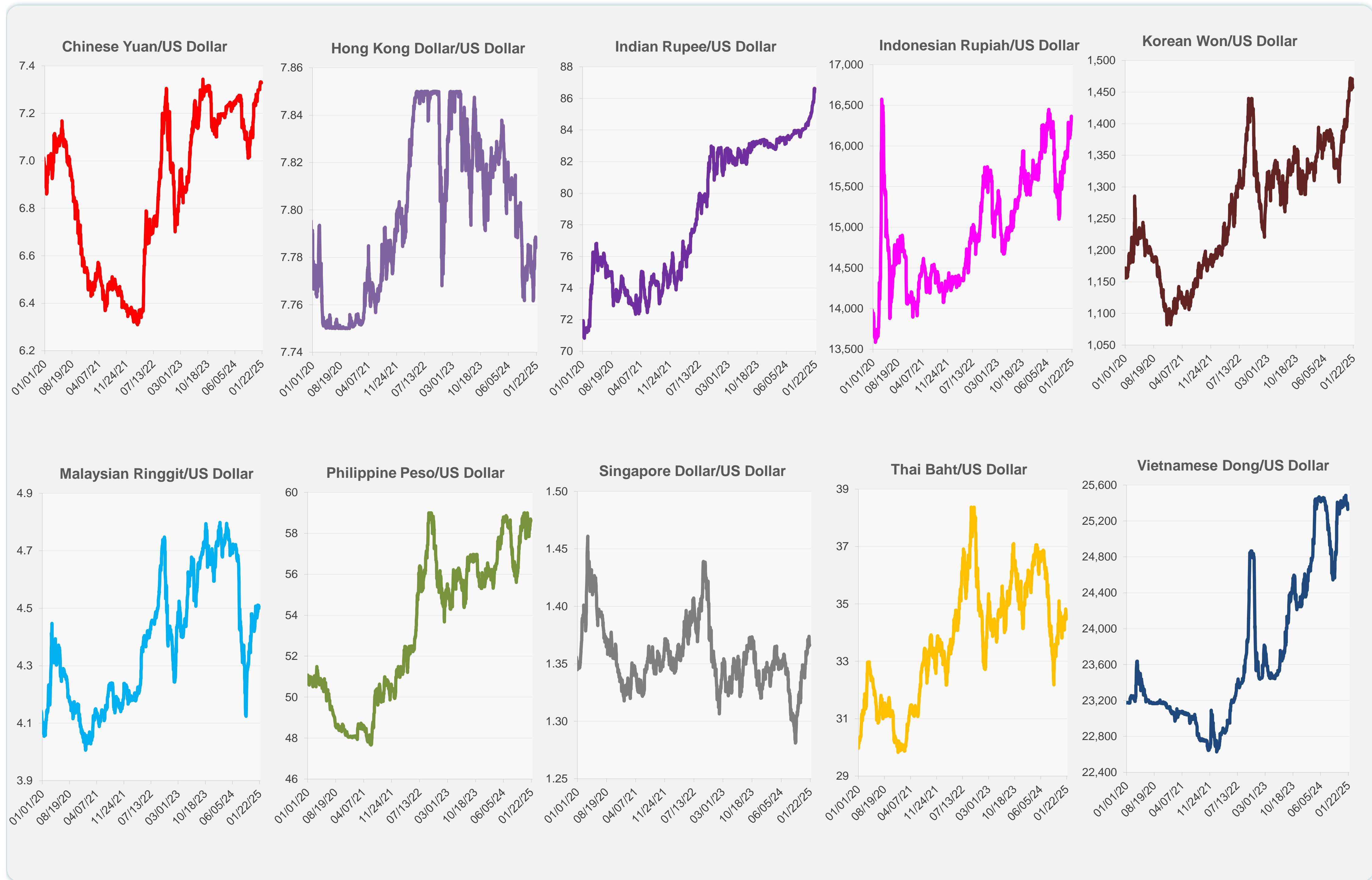
	Latest Closing	% change from Previous Day	% change from 01-Jan-25
Euro	0.97	0.00	-0.53
Japanese yen (JPY)	156.13	-0.44	0.66
Bangladeshi taka (BDT)	121.50	0.00	-1.65
Brunei dollar (BND)	1.37	-0.04	-0.17
Chinese yuan (CNY)	7.33	0.05	-0.40
Hong Kong dollar (HKD)	7.78	0.06	-0.21
Indian rupee (INR)	86.61	-0.07	-1.15
Indonesian rupiah (IDR)	16,365.00	-0.03	-1.65
Korean won (KRW)	1,457.85	-0.08	0.98
Malaysian ringgit (MYR)	4.51	-0.08	-0.77
Pakistan rupee (PKR)	278.70	0.04	-0.12
Philippine peso (PHP)	58.64	-0.06	-1.36
Singapore dollar (SGD)	1.37	-0.04	-0.17
Sri Lanka rupee (LKR)	296.45	-0.05	-1.17
Taipei,China NT dollar (TWD)	32.93	0.00	-0.43
Thai baht (THB)	34.47	0.39	-1.07
Vietnamese dong (VND)	25,327.50	0.20	0.62



NIE = Newly Industrialized Economies



Note: Negative/Decreasing values indicate depreciation of local currency, and positive/increasing values indicate appreciation.  
Source: ADB calculations using data from Haver Analytics.

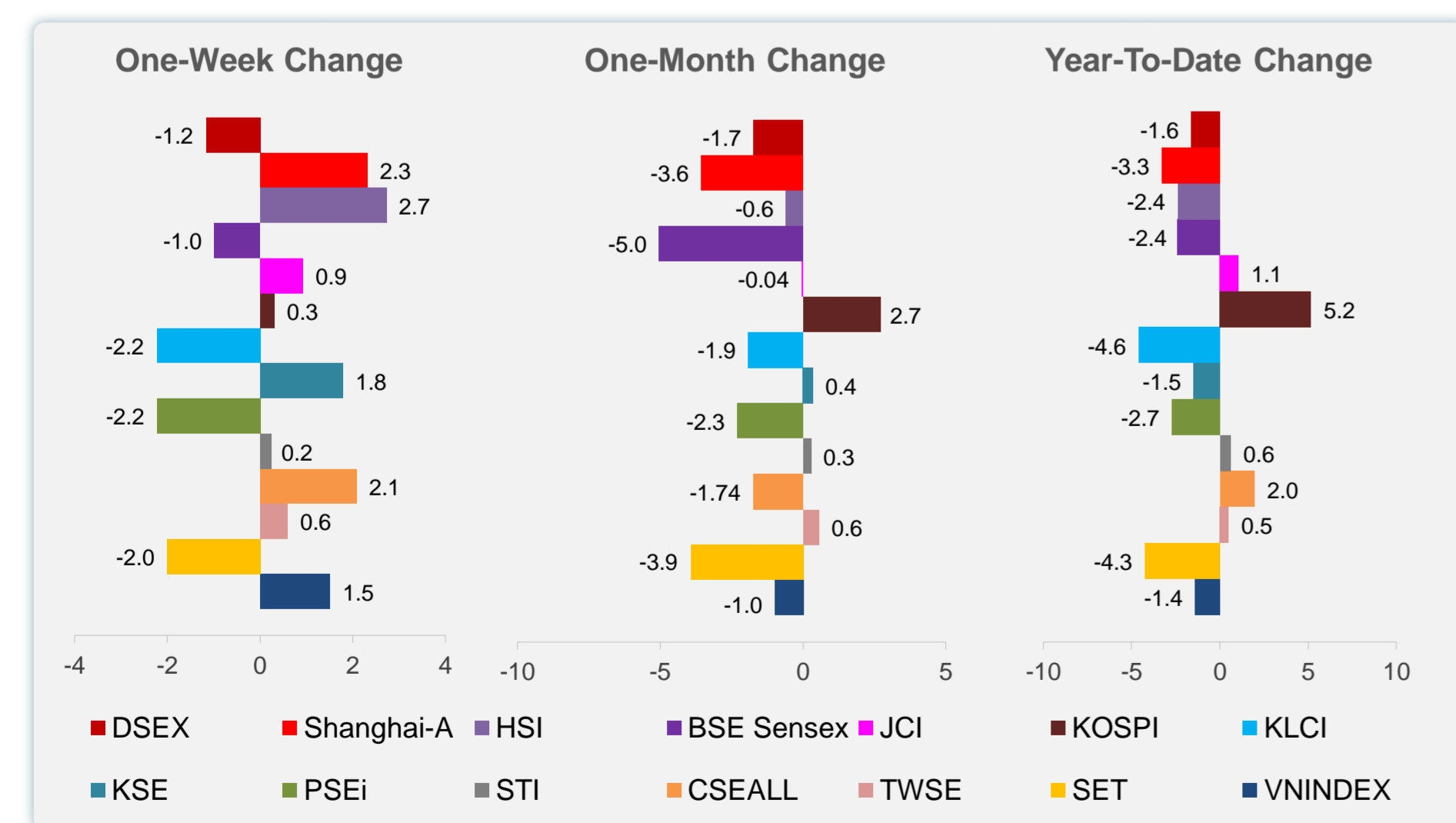
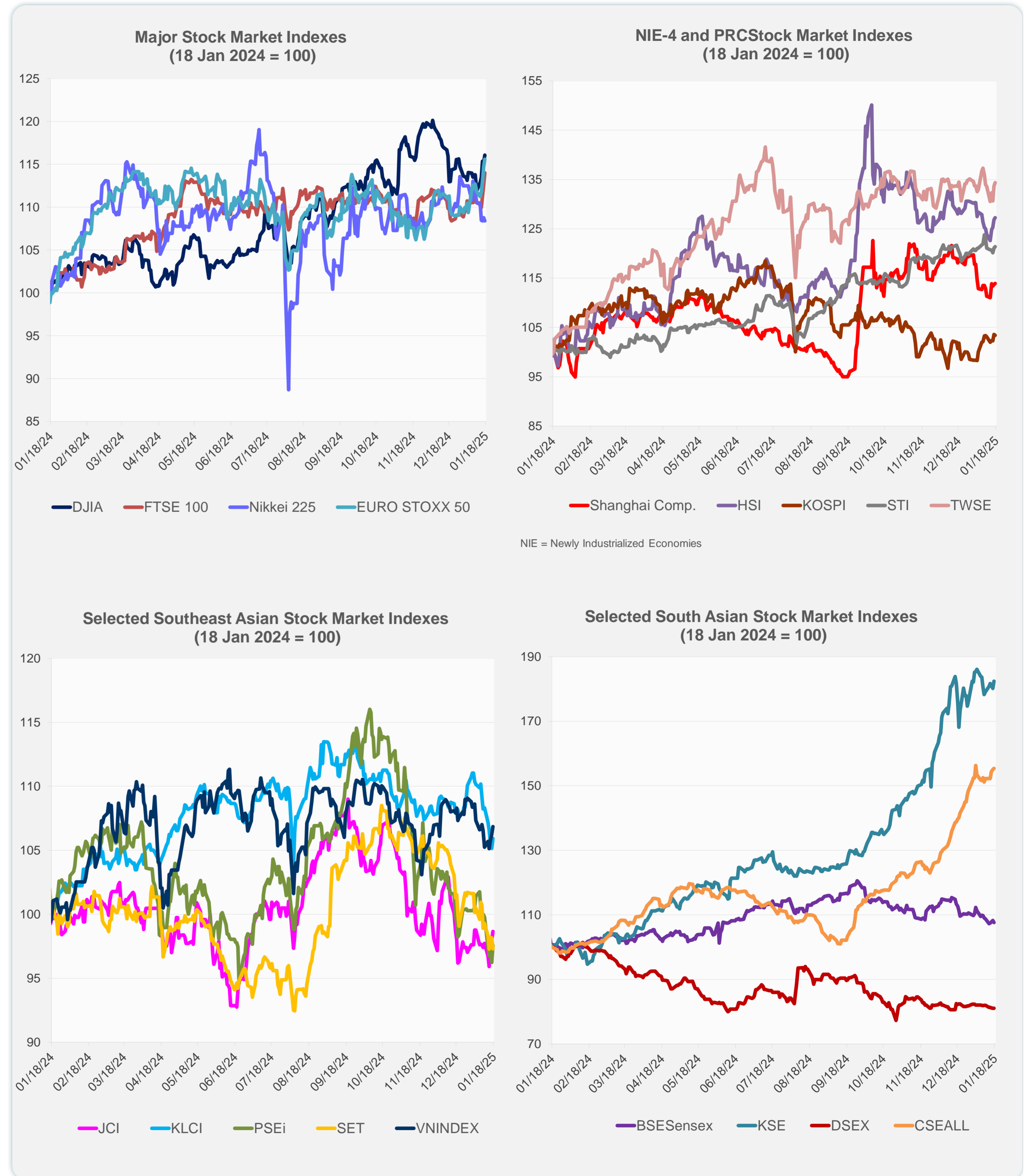


Source: Haver Analytics.

# Daily Market Watch STOCK INDEXES

20 January 2025, 9:00 AM Manila

	Latest Closing	% change from Previous Day	% change from 01-Jan-25
US Dow Jones Ind Avg	43,487.83	0.78	2.22
US NASDAQ	19,630.20	1.51	1.65
US S&P 500	5,996.66	1.00	1.96
UK FTSE 100	8,505.22	1.35	4.06
EURO STOXX 50	5,148.30	0.81	5.15
Japan NIKKEI 225	38,451.46	-0.31	-3.62
Bangladesh DSEX	5,133.92	0.00	-1.61
PRC Shanghai Comp.	3,241.82	0.18	-3.28
Hong Kong, China HSI	19,584.06	0.31	-2.37
India BSE Sensex	76,619.33	-0.55	-2.40
Indonesia JCI	7,154.66	0.66	1.06
Korea, Rep. of KOSPI	2,523.55	-0.16	5.17
Malaysia KLCI	1,566.72	0.72	-4.60
Pakistan KSE 100	115,272.08	1.26	-1.48
Philippines PSEi	6,352.12	1.38	-2.71
Singapore STI	3,810.78	0.25	0.61
Sri Lanka CSEALL	16,257.31	0.26	1.96
Taipei, China TWSE	23,148.08	0.53	0.49
Thailand SET	1,340.63	-0.88	-4.26
Viet Nam VNINDEX	1,249.11	0.54	-1.39



Sources: ADB calculations using data from CEIC Data Company and Haver Analytics.



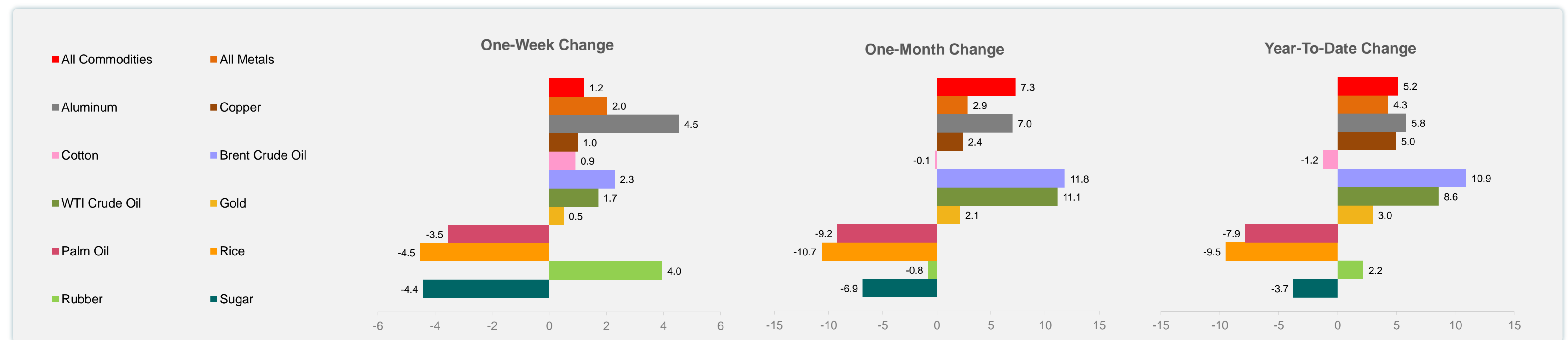
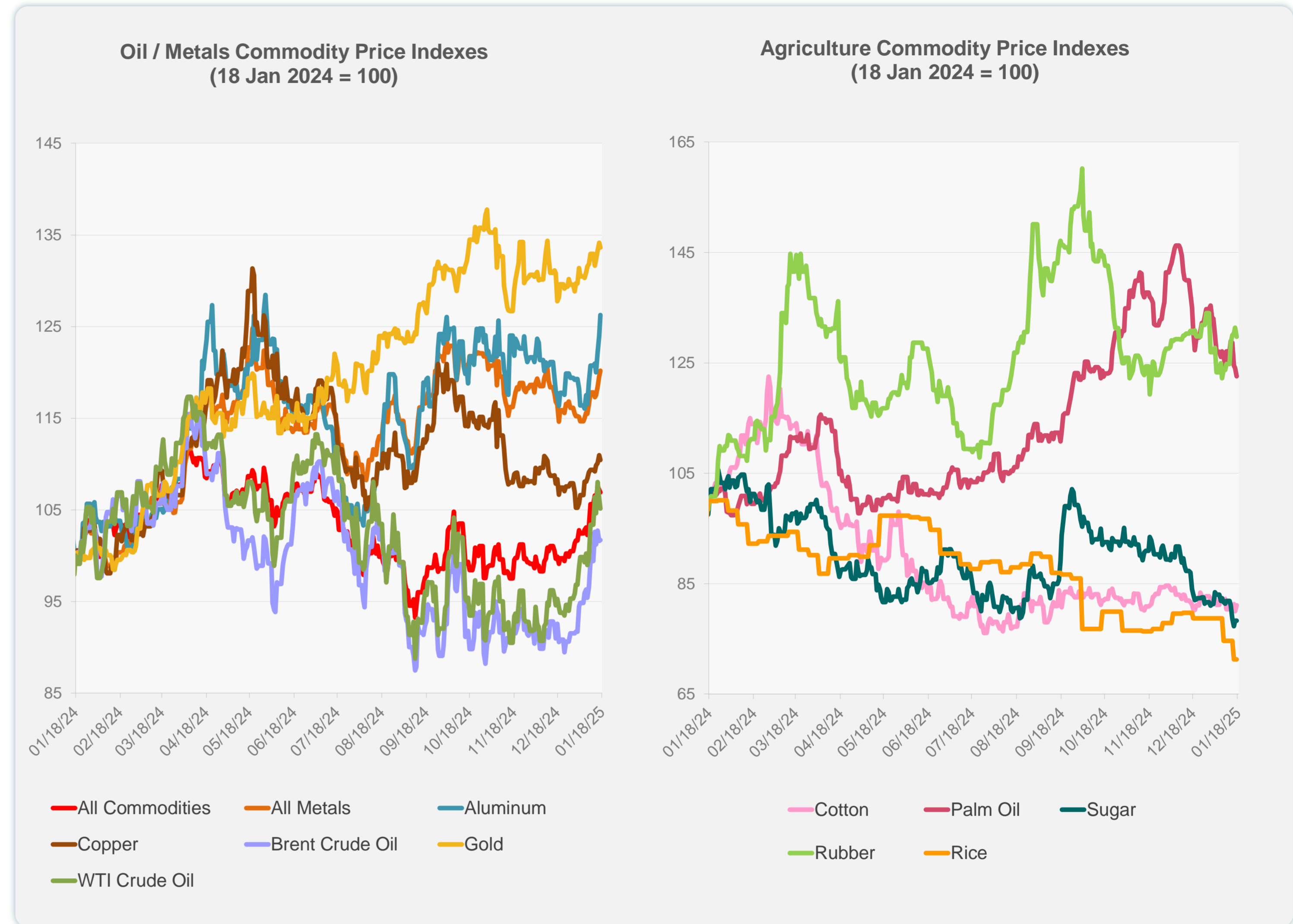
Sources: CEIC Data Company and Haver Analytics.

Daily Market Watch  
**COMMODITY PRICES**

20 January 2025, 9:00 AM Manila

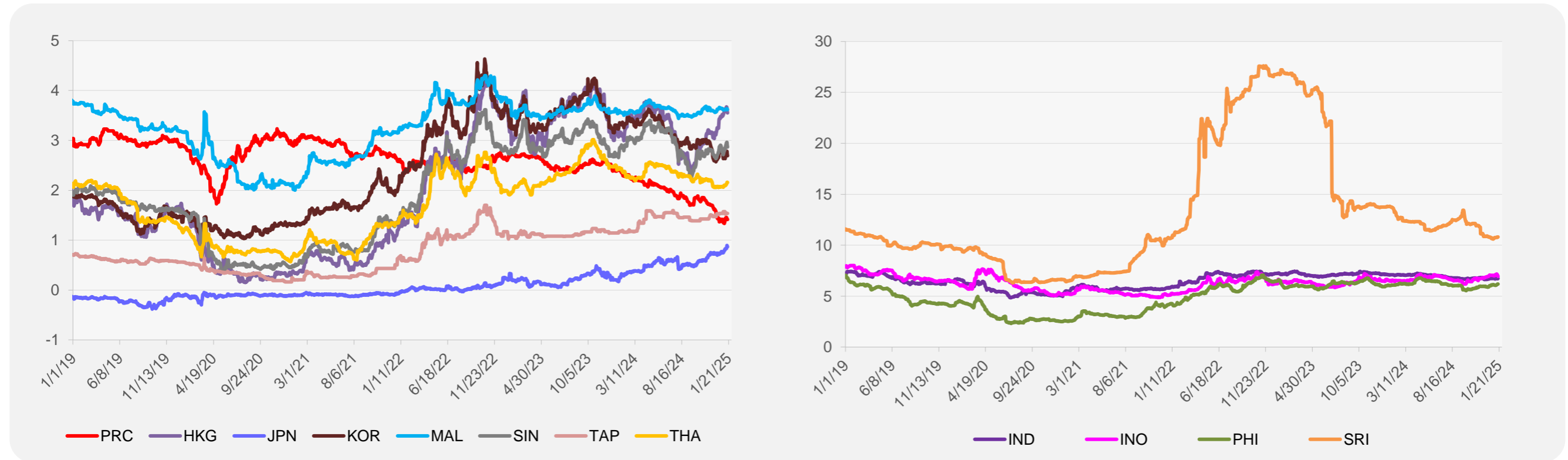
	Unit	Latest Closing	% change from Previous Day	% change from 01-Jan-25
S&P All Commodities	US\$	577.96	-0.24	5.15
S&P All Metals	US\$	320.59	0.48	4.30
Aluminum	US\$/metric ton	2,674.08	1.84	5.83
Copper	US\$/metric ton	9,081.89	-0.45	4.96
Cotton	US cents/lb	65.10	1.35	-1.21
Brent Crude Oil	US\$/barrel	82.20	0.10	10.92
WTI Crude Oil	US\$/barrel	77.88	-1.02	8.59
Gold	US\$/troy oz	2,703.25	-0.41	3.00
Palm Oil	US\$/metric tonne	1,013.76	-1.18	-7.85
Rice <sup>1</sup>	US\$/metric ton	486.00	0.00	-9.50
Rubber <sup>2</sup>	US\$/kg	242.00	-1.22	2.20
Sugar	US cents/lb	17.52	0.00	-3.74

<sup>1</sup> Latest closing price from 15 January 2025.  
<sup>2</sup> Singapore Exchange, Ribbed Smoked Sheet Rubber.

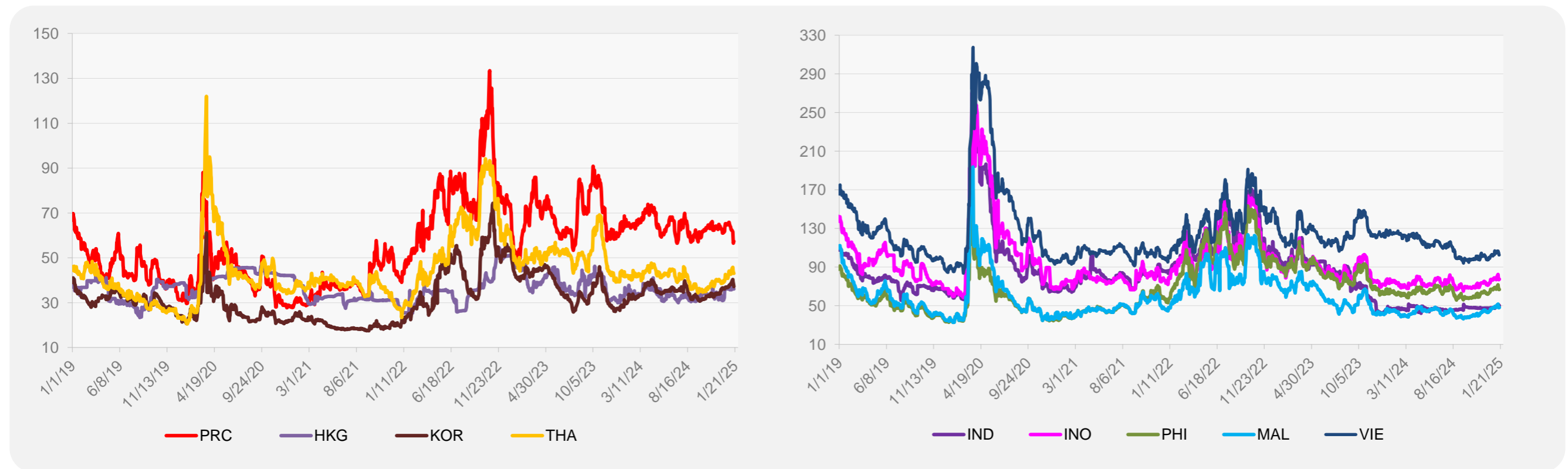


Source: ADB calculations using data from Bloomberg.

### 5-YEAR LOCAL CURRENCY GOVERNMENT BOND YIELDS (%)



### 5-YEAR CREDIT DEFAULT SWAP<sup>1</sup>



<sup>1</sup> In USD and based on sovereign bonds.  
Source: ADB calculations using data from Bloomberg.